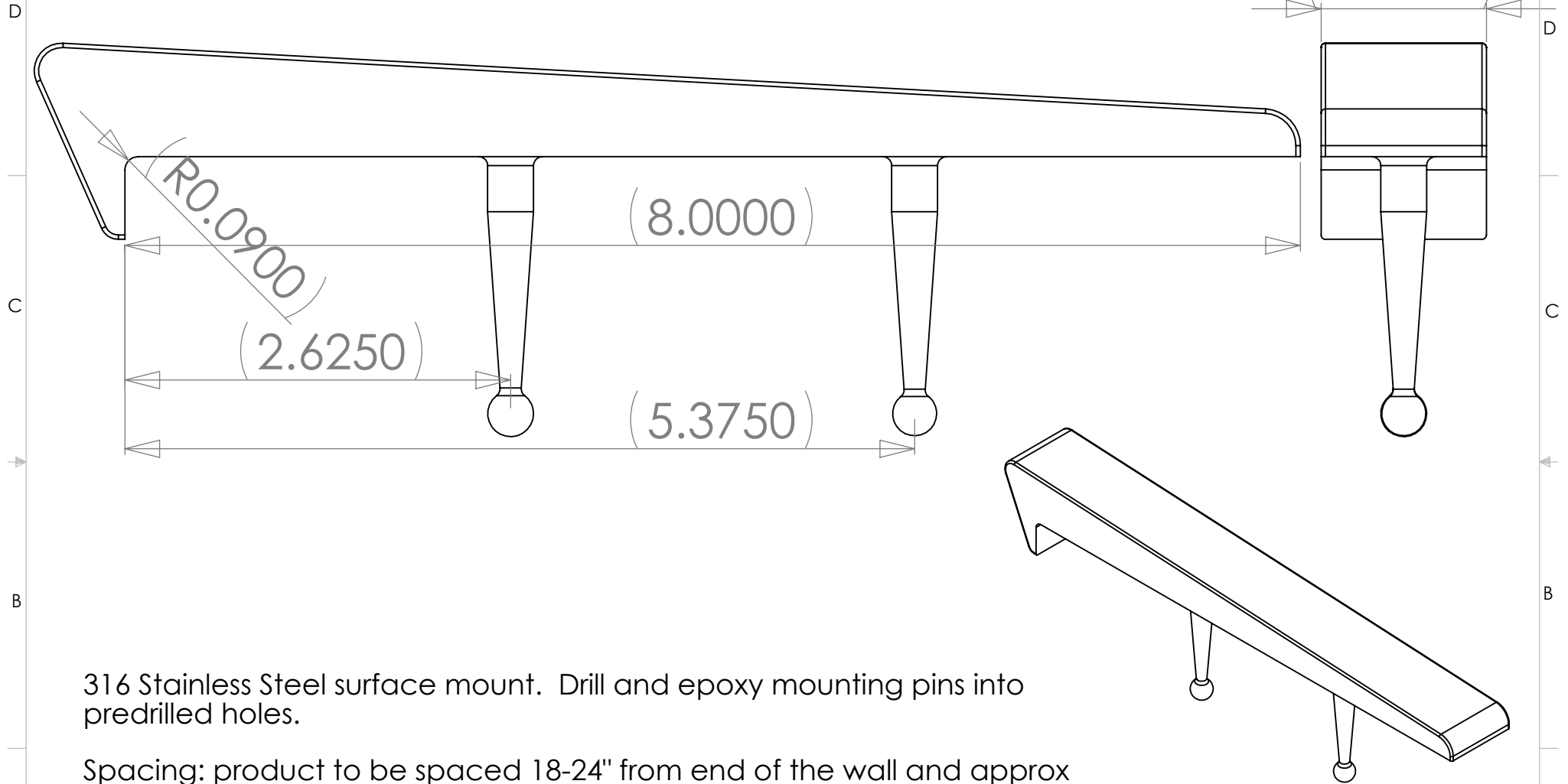


THE INFORMATION CONTAINED IN THIS DRAWING IS THE SOLE PROPERTY OF
INTELLICEPT. ANY REPRODUCTION IN PART OR WHOLE WITHOUT
THE WRITTEN PERMISSION OF INTELLICEPT IS PROHIBITED.



316 Stainless Steel surface mount. Drill and epoxy mounting pins into
predrilled holes.

Spacing: product to be spaced 18-24" from end of the wall and approx
36" +/- 6" on center (do not exceed 4' max). Do not apply product at
grout joint. For applications with grout joints, layout should be symmetric
but part locations must be safe drilling distance from joint (min 4")

**Not intended for use on steps, stairs, sidewalk curb or any
other pedestrian trafficked surface.**

INTELLICEPT
SAN DIEGO, CALIFORNIA, U.S.A.

G012SS
316 Stainless Steel

SIZE A	DWG. NO.	REV.
SCALE	CAD FILE:	SHEET OF