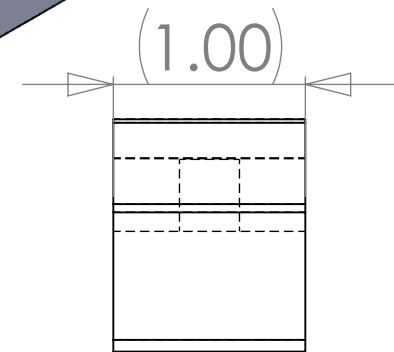
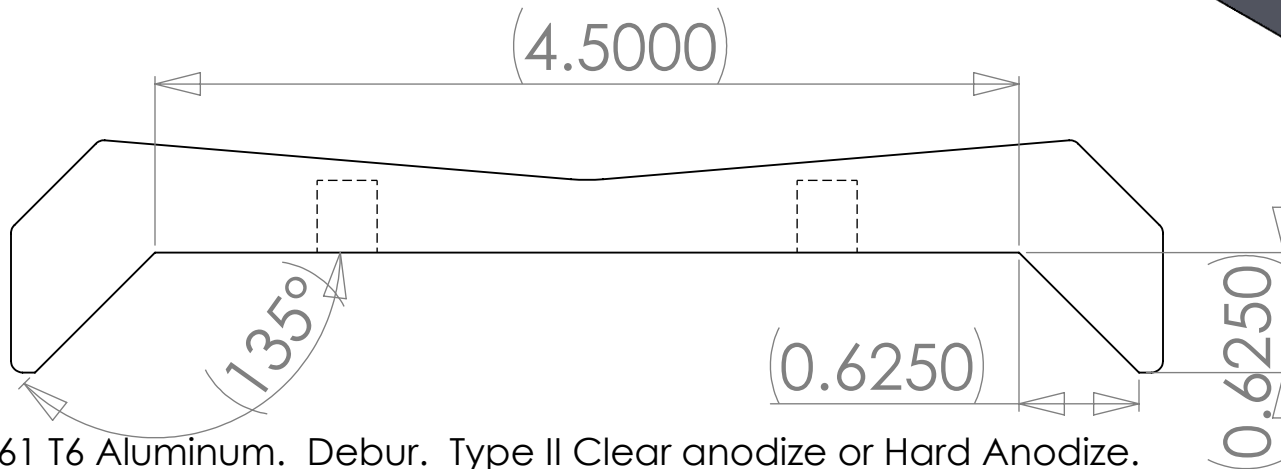
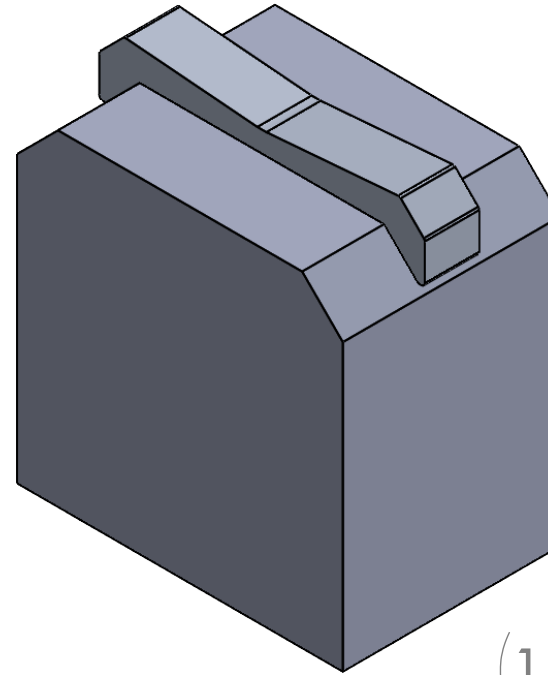


# Straddle for 6" wall with 3/4" Chamfer on both sides



6061 T6 Aluminum. Debur. Type II Clear anodize or Hard Anodize.  
Set with two 3/8" x 1-1/2" studs and epoxy.

Spacing: product to be spaced 18-24" from end of the wall and approx 36" +/- 6" on center (do not exceed 4' max). Do not apply product at grout joint. For applications with grout joints, layout should be symmetric but part locations must be safe drilling distance from joint (min 4")

**Not intended for use on steps, stairs, sidewalk curb or any other pedestrian trafficked surface.**

INTELLICEPT SAN DIEGO, CALIFORNIA, U.S.A.			
Gorilla 135-6 Straddle			
SIZE A	DWG. NO.	REV.	
SCALE	CAD FILE:	SHEET	OF