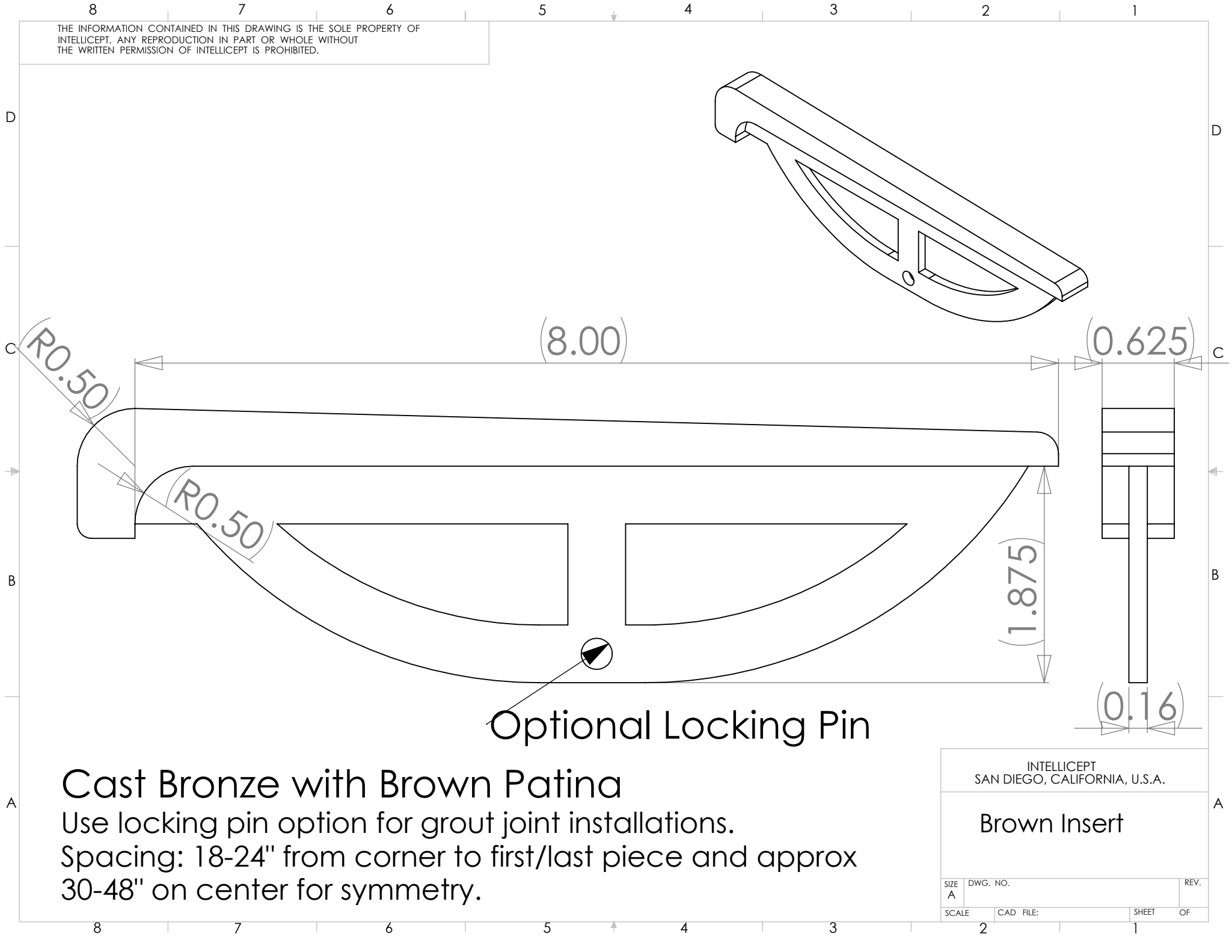


THE INFORMATION CONTAINED IN THIS DRAWING IS THE SOLE PROPERTY OF INTELLECT. ANY REPRODUCTION IN PART OR WHOLE WITHOUT THE WRITTEN PERMISSION OF INTELLECT IS PROHIBITED.



Optional Locking Pin

# Cast Bronze with Brown Patina

Use locking pin option for grout joint installations.  
Spacing: 18-24" from corner to first/last piece and approx 30-48" on center for symmetry.

|  |           |       |    |
|--|-----------|-------|----|
| INTELLECT<br>SAN DIEGO, CALIFORNIA, U.S.A. |           |       |    |
| Brown Insert                               |           |       |    |
| SIZE<br>A                                  | DWG. NO.  | REV.  |    |
| SCALE                                      | CAD FILE: | SHEET | OF |
|  |           | 2     | 1  |