

# PRODUCT DETAILS

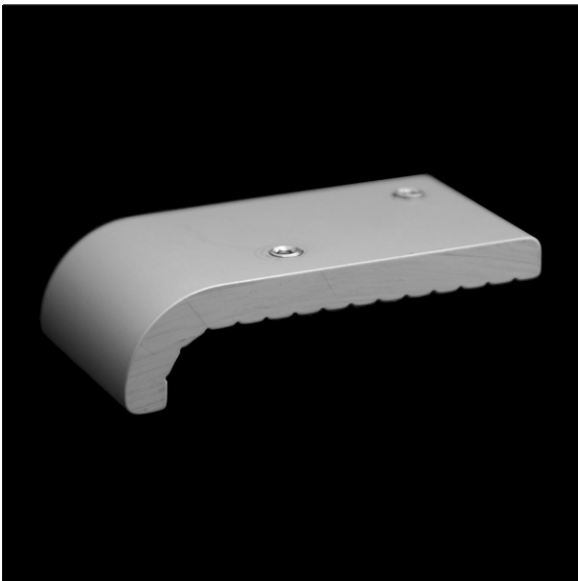
## FR 0.5

(FR Series - Surface Mount Aluminum)

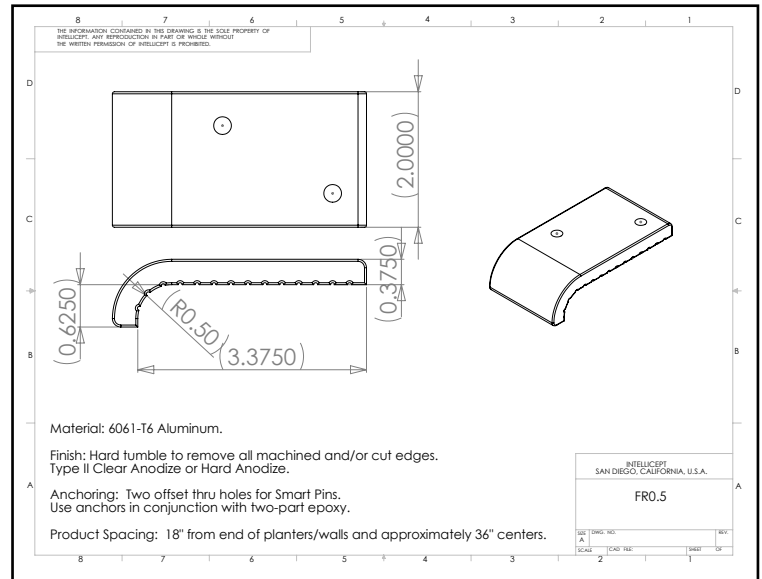


**Description:** This part is designed for walls, planters, or benches with 1/2" radius edge (may also be used in place of model FA902.5).

This product is not intended for use on steps, stairs, sidewalk curb, or any pedestrian trafficked surfaces.



shown in Clear Anodize



**Material:** 6061-T6 Aluminum

**Finish:** Hard tumble to remove all machined and/or cut edges. Aluminum finish options include Type II Clear Anodize or Hard Anodize.

**Corner Radius:** For corner with 1/2" radius.

**Outside Dimensions:** 2" (wide) x 3 3/4" (deep) x 1" (tall)

**Anchoring:** Two offset thru holes for Smart Pins Plus. Use anchors in conjunction with two-part epoxy.

**Product Spacing:** 18" from end of planters/walls and approximately 36" centers. Do not apply at grout joints.