



1547 N. Cuyamaca, El Cajon, CA 92020
Tel 619-447-6374 Fax 619-447-6396

www.skatestoppers.com

Architectural Series

(Material Options)



Aluminum



Silicon Bronze

Alloy

Aluminum*

Silicon Bronze*

Finish

Aluminum: Clear Anodize

Silicon Bronze: Brown Patina with Satin Coat

*min. 75% recycled content

PRODUCT DETAILS

Maple Leaf

6 piece family
(Architectural Series)



1547 N. Cuyamaca, El Cajon, CA 92020
Tel 619-447-6374 Fax 619-447-6396

www.skatestoppers.com

Description: The Maple Leaf family consists of 6 different maple leaves rendered at realistic scale and incredible detail. The parts use two concealed SMART PINS PLUS anchors.



(shown in Cast Silicon Bronze)



(6 different leaves)

Material: Cast Aluminum or Cast Silicon Bronze

Cast Aluminum: Clear Anodize

Cast Silicon Bronze: Brown Patina Finish

Corner Radius: Available in 1/8" radius, 1" radius, or chamfer. Also available in flattened Wallart for accents (3 piece family).

Outside Dimensions: Approx. 5" (wide) x 5" (deep) x 1/2" (tall)

Anchoring: Anchored with two blind SMART PINS PLUS anchors. Use anchors in conjunction with two-part epoxy.

Product Spacing: 18" from end of planters/walls and approximately 36" centers. Do not apply at grout joints.

PRODUCT DETAILS

White Oak

6 piece family
(Architectural Series)



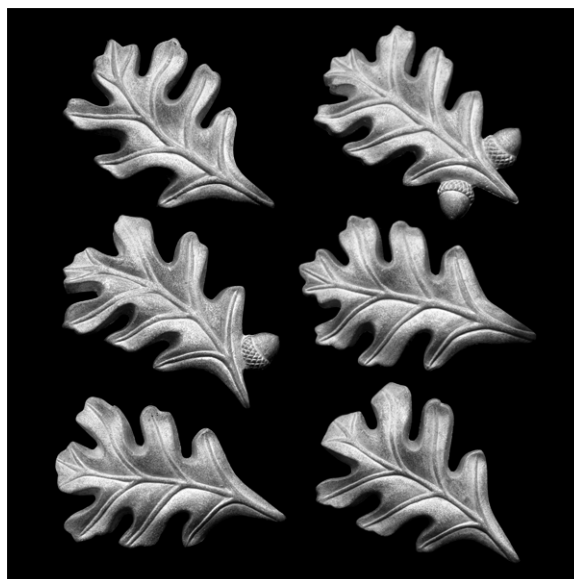
1547 N. Cuyamaca, El Cajon, CA 92020
Tel 619-447-6374 Fax 619-447-6396

www.skatestoppers.com

Description: The White Oak family consists of 6 different white oak leaves rendered at realistic scale and incredible detail. The parts use two concealed SMART PINS PLUS anchors.



(shown in Cast Silicon Bronze)



(6 different leaves shown in Cast Aluminum)

Material: Cast Aluminum or Cast Silicon Bronze

Cast Aluminum: Clear Anodize

Cast Silicon Bronze: Brown Patina Finish

Corner Radius: Available in 1/8" radius, 3/4" radius, 1" radius, 1-1/4" radius, 1-1/2" radius, or chamfer. Also available in flattened Wallart for accents (3 piece family).

Outside Dimensions: Approx. 3" (wide) x 6" (deep) x 1/2" (tall)

Anchoring: Anchored with two blind SMART PINS PLUS anchors. Use anchors in conjunction with two-part epoxy.

Product Spacing: 18" from end of planters/walls and approximately 36" centers. Do not apply at grout joints.

PRODUCT DETAILS

Chestnut

6 piece family
(Architectural Series)



1547 N. Cuyamaca, El Cajon, CA 92020
Tel 619-447-6374 Fax 619-447-6396

www.skatestoppers.com

Description: The Chestnut family consists of 6 different chestnut leaves rendered at realistic scale and incredible detail. The parts use two concealed SMART PINS PLUS anchors.



(shown in Cast Silicon Bronze)



(6 different leaves)

Material: Cast Aluminum or Cast Silicon Bronze

Cast Aluminum: Clear Anodize

Cast Silicon Bronze: Brown Patina Finish

Corner Radius: Available in 1/8" radius or chamfer.

Outside Dimensions: Approx. 6" (wide) x 6" (deep) x 1/2" (tall)

Anchoring: Anchored with two blind SMART PINS PLUS anchors. Use anchors in conjunction with two-part epoxy.

Product Spacing: 18" from end of planters/walls and approximately 36" centers. Do not apply at grout joints.

PRODUCT DETAILS

Gum Tree

6 piece family
[Architectural Series]



1547 N. Cuyamaca, El Cajon, CA 92020
Tel 619-447-6374 Fax 619-447-6396

www.skatestoppers.com

Description: The Gum Tree family consists of 6 different gum tree leaves rendered at realistic scale and incredible detail. The parts use two concealed SMART PINS PLUS anchors.



(shown in Cast Aluminum)



(6 different leaves)

Material: Cast Aluminum or Cast Silicon Bronze

Cast Aluminum: Clear Anodize

Cast Silicon Bronze: Brown Patina Finish

Corner Radius: Available in 1/8" radius, 1" radius, or chamfer. Also available in flattened Wallart for accents (3 piece family).

Outside Dimensions: Approx. 5" (wide) x 5" (deep) x 1/2" (tall)

Anchoring: Anchored with two blind SMART PINS PLUS anchors. Use anchors in conjunction with two-part epoxy.

Product Spacing: 18" from end of planters/walls and approximately 36" centers. Do not apply at grout joints.

PRODUCT DETAILS

Sea Life

5 piece family
(Architectural Series)



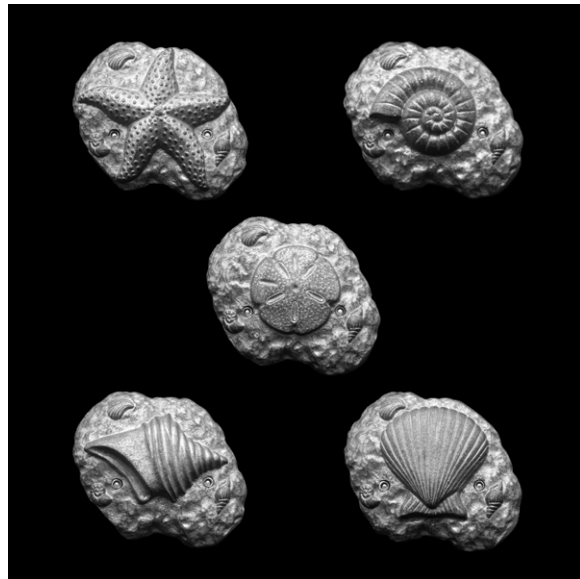
1547 N. Cuyamaca, El Cajon, CA 92020
Tel 619-447-6374 Fax 619-447-6396

www.skatestoppers.com

Description: The Sea Life family consists of 5 different sea life parts rendered at realistic scale and incredible detail. The parts use two SMART PINS PLUS anchors.



(shown in Cast Aluminum)



(5 different designs)

Material: Cast Aluminum or Cast Silicon Bronze

Cast Aluminum: Clear Anodize

Cast Silicon Bronze: Brown Patina Finish

Corner Radius: Available in 1/8" radius, 1/2" radius, 1" radius, 1-1/2" radius, 3" radius, 6" radius, or chamfer. Also available in flattened Wallart for accents (5 piece family).

Outside Dimensions: Approx. 4-1/2" (wide) x 5" (deep) x 1/2" (tall)

Anchoring: Anchored with two SMART PINS PLUS anchors. Use anchors in conjunction with two-part epoxy.

Product Spacing: 18" from end of planters/walls and approximately 36" centers. Do not apply at grout joints.

PRODUCT DETAILS

Starfish

6 piece family
(Architectural Series)



1547 N. Cuyamaca, El Cajon, CA 92020
Tel 619-447-6374 Fax 619-447-6396

www.skatestoppers.com

Description: The Starfish family consists of 6 different starfish rendered at realistic scale and incredible detail. The parts use two concealed SMART PINS PLUS anchors.



(shown in Cast Silicon Bronze)



(6 different starfish)

Material: Cast Silicon Bronze with Brown Patina Finish

Corner Radius: Available in 1/8" radius, 1/2" radius, 1" radius, 1-1/4" radius, 1-1/2" radius, or chamfer. Also available in flattened Wallart for accents (6 piece family).

Outside Dimensions: Approx. 6" (wide) x 6" (deep) x 1/2" (tall)

Anchoring: Anchored with two blind SMART PINS PLUS anchors. Use anchors in conjunction with two-part epoxy.

Product Spacing: 18" from end of planters/walls and approximately 36" centers. Do not apply at grout joints.

PRODUCT DETAILS

Frogs

2 piece family

(Architectural Series)



1547 N. Cuyamaca, El Cajon, CA 92020
Tel 619-447-6374 Fax 619-447-6396

www.skatestoppers.com

Description: The Frogs family consists of 2 different frogs rendered at realistic scale and incredible detail. The parts use two SMART PINS PLUS anchors.



(shown in Cast Silicon Bronze)



(shown in Cast Aluminum)

Material: Cast Aluminum or Cast Silicon Bronze

Cast Aluminum: Clear Anodize

Cast Silicon Bronze: Brown Patina Finish

Corner Radius: Available in 1/2" and chamfer. Also available in flattened Wallart for accents (2 piece frogs, 1 piece dragonfly).

Outside Dimensions: Approx. 5" (wide) x 4" (deep) x 1/2" (tall)

Anchoring: Anchored with two SMART PINS PLUS anchors. Use anchors in conjunction with two-part epoxy.

Product Spacing: 18" from end of planters/walls and approximately 36" centers. Do not apply at grout joints.

PRODUCT DETAILS

Arches

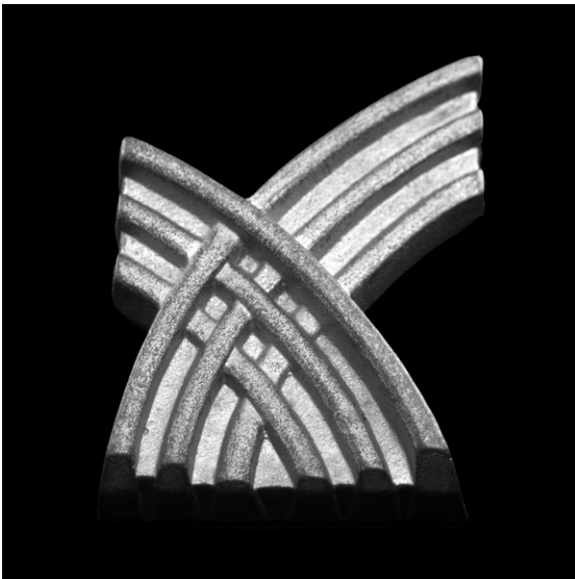
(Architectural Series)



1547 N. Cuyamaca, El Cajon, CA 92020
Tel 619-447-6374 Fax 619-447-6396

www.skatestoppers.com

Description: The cast parts are rendered at realistic scale and incredible detail. The parts use two conceal SMART PINS PLUS anchors.



(shown in Cast Aluminum)

Material: Cast Aluminum or Cast Silicon Bronze

Cast Aluminum: Clear Anodize

Cast Silicon Bronze: Brown Patina Finish

Corner Radius: Available in 1/8" radius, 1" radius, or chamfer. Also available in 1" relief with 1" radius.

Outside Dimensions: Approx. 3-1/2" (wide) x 5" (deep) x 1/2" (tall)

Anchoring: Anchored with two blind SMART PINS PLUS anchors. Use anchors in conjunction with two-part epoxy.

Product Spacing: 18" from end of planters/walls and approximately 36" centers. Do not apply at grout joints.

PRODUCT DETAILS

Circles

(Architectural Series)



1547 N. Cuyamaca, El Cajon, CA 92020
Tel 619-447-6374 Fax 619-447-6396

www.skatestoppers.com

Description: The cast parts are rendered at realistic scale and incredible detail. The parts use two concealed SMART PINS PLUS anchors.



(shown in Cast Aluminum)

Material: Cast Aluminum or Cast Silicon Bronze

Cast Aluminum: Clear Anodize

Cast Silicon Bronze: Brown Patina Finish

Corner Radius: Available in 1/8" radius, 1" radius, or chamfer.

Outside Dimensions: Approx. 3-1/2" (wide) x 5" (deep) x 1/2" (tall)

Anchoring: Anchored with two blind SMART PINS PLUS anchors. Use anchors in conjunction with two-part epoxy.

Product Spacing: 18" from end of planters/walls and approximately 36" centers. Do not apply at grout joints.

PRODUCT DETAILS

Seascape

(Architectural Series)

SKATE STOPPERS
1547 N. Cuyamaca, El Cajon, CA 92020
Tel 619-447-6374 Fax 619-447-6396
www.skatestoppers.com

Description: The cast parts are rendered at realistic scale and incredible detail. The parts use two concealed SMART PINS PLUS anchors.



(shown in Cast Aluminum)

Material: Cast Aluminum or Cast Silicon Bronze

Cast Aluminum: Clear Anodize

Cast Silicon Bronze: Brown Patina Finish

Corner Radius: Available in 1/8" radius, 1" radius, or chamfer.

Outside Dimensions: Approx. 3" (wide) x 5" (deep) x 1/2" (tall)

Anchoring: Anchored with two blind SMART PINS PLUS anchors. Use anchors in conjunction with two-part epoxy.

Product Spacing: 18" from end of planters/walls and approximately 36" centers. Do not apply at grout joints.

PRODUCT DETAILS

Bullnose

(Architectural Series)



1547 N. Cuyamaca, El Cajon, CA 92020
Tel 619-447-6374 Fax 619-447-6396

www.skatestoppers.com

Description: The cast parts are rendered at realistic scale and incredible detail. The parts use two SMART PINS PLUS anchors.



(shown in Cast Aluminum)

Material: Cast Aluminum or Cast Silicon Bronze

Cast Aluminum: Clear Anodize

Cast Silicon Bronze: Brown Patina Finish

Corner Radius: Available in 1/8" radius, 1/2" radius, 1" radius, 1-1/4" radius, 1-1/2" radius, 2" radius, or 3" radius.

Outside Dimensions: Approx. 3" (wide) x 5" (deep) x 1/2" (tall)

Anchoring: Anchored with two SMART PINS PLUS anchors. Use anchors in conjunction with two-part epoxy.

Product Spacing: 18" from end of planters/walls and approximately 36" centers. Do not apply at grout joints.

PRODUCT DETAILS

Vine

(Architectural Series)



1547 N. Cuyamaca, El Cajon, CA 92020
Tel 619-447-6374 Fax 619-447-6396

www.skatestoppers.com

Description: The cast parts are rendered at realistic scale and incredible detail. The parts use two SMART PINS PLUS anchors.



(shown in Cast Aluminum)

Material: Cast Aluminum or Cast Silicon Bronze

Cast Aluminum: Clear Anodize

Cast Silicon Bronze: Brown Patina Finish

Corner Radius: Available in 1/8" radius, 1" radius, or chamfer.

Outside Dimensions: Approx. 3" (wide) x 4-1/2" (deep) x 1/2" (tall)

Anchoring: Anchored with two SMART PINS PLUS anchors. Use anchors in conjunction with two-part epoxy.

Product Spacing: 18" from end of planters/walls and approximately 36" centers. Do not apply at grout joints.

PRODUCT DETAILS

Trolley

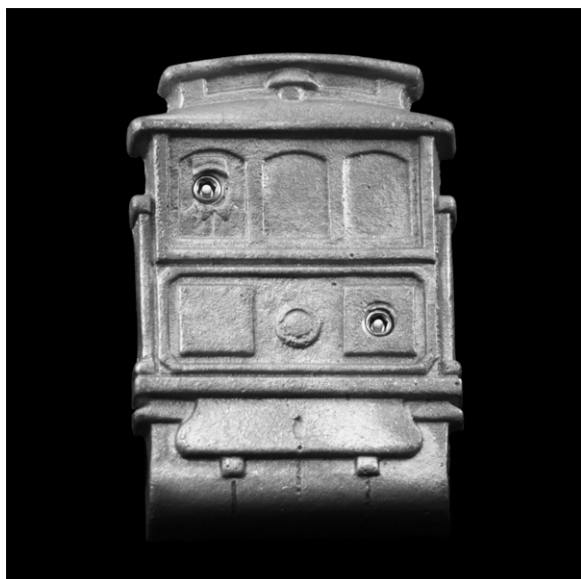
(Architectural Series)



1547 N. Cuyamaca, El Cajon, CA 92020
Tel 619-447-6374 Fax 619-447-6396

www.skatestoppers.com

Description: The cast parts are rendered at realistic scale and incredible detail. The parts use two SMART PINS PLUS anchors.



(shown in Cast Aluminum)

Material: Cast Aluminum or Cast Silicon Bronze

Cast Aluminum: Clear Anodize

Cast Silicon Bronze: Brown Patina Finish

Corner Radius: Available in 1/8" radius, 1" radius, or chamfer.

Outside Dimensions: Approx. 3" (wide) x 4-1/2" (deep) x 1/2" (tall)

Anchoring: Anchored with two SMART PINS PLUS anchors. Use anchors in conjunction with two-part epoxy.

Product Spacing: 18" from end of planters/walls and approximately 36" centers. Do not apply at grout joints.

PRODUCT DETAILS

Leaf

(Architectural Series)



1547 N. Cuyamaca, El Cajon, CA 92020
Tel 619-447-6374 Fax 619-447-6396

www.skatestoppers.com

Description: The cast parts are rendered at realistic scale and incredible detail. The parts use two SMART PINS PLUS anchors.



(shown in Cast Aluminum)

Material: Cast Aluminum or Cast Silicon Bronze

Cast Aluminum: Clear Anodize

Cast Silicon Bronze: Brown Patina Finish

Corner Radius: Available in 1/8" radius, 1" radius, 2" radius, or chamfer.

Outside Dimensions: Approx. 5" (wide) x 6" (deep) x 1/2" (tall)

Anchoring: Anchored with two SMART PINS PLUS anchors. Use anchors in conjunction with two-part epoxy.

Product Spacing: 18" from end of planters/walls and approximately 36" centers. Do not apply at grout joints.

PRODUCT DETAILS

Ginko

[Architectural Series]



1547 N. Cuyamaca, El Cajon, CA 92020
Tel 619-447-6374 Fax 619-447-6396

www.skatestoppers.com

Description: The cast parts are rendered at realistic scale and incredible detail. The parts use two conceal SMART PINS PLUS anchors.



(shown in Cast Silicon Bronze)

Material: Cast Aluminum or Cast Silicon Bronze

Cast Aluminum: Clear Anodize

Cast Silicon Bronze: Brown Patina Finish

Corner Radius: Available in 1/8" radius and 1/2" radius.

Outside Dimensions: Approx. 5-1/2" (wide) x 5" (deep) x 1/2" (tall)

Anchoring: Anchored with two blind SMART PINS PLUS anchors. Use anchors in conjunction with two-part epoxy.

Product Spacing: 18" from end of planters/walls and approximately 36" centers. Do not apply at grout joints.

PRODUCT DETAILS

Flowers

(Architectural Series)



1547 N. Cuyamaca, El Cajon, CA 92020
Tel 619-447-6374 Fax 619-447-6396

www.skatestoppers.com

Description: The cast parts are rendered at realistic scale and incredible detail. The parts use two SMART PINS PLUS anchors.



(shown in Cast Aluminum)

Material: Cast Aluminum or Cast Silicon Bronze

Cast Aluminum: Clear Anodize

Cast Silicon Bronze: Brown Patina Finish

Corner Radius: Available in 1/8" radius, 3/4" radius, 1" radius, or chamfer.

Outside Dimensions: Approx. 4" (wide) x 5" (deep) x 1/2" (tall)

Anchoring: Anchored with two SMART PINS PLUS anchors. Use anchors in conjunction with two-part epoxy.

Product Spacing: 18" from end of planters/walls and approximately 36" centers. Do not apply at grout joints.

PRODUCT DETAILS

Lilacs

(Architectural Series)



1547 N. Cuyamaca, El Cajon, CA 92020
Tel 619-447-6374 Fax 619-447-6396

www.skatestoppers.com

Description: The cast parts are rendered at realistic scale and incredible detail. The parts use two SMART PINS PLUS anchors.

Image
Coming
Soon

(shown in Cast Aluminum)

Material: Cast Aluminum or Cast Silicon Bronze

Cast Aluminum: Clear Anodize

Cast Silicon Bronze: Brown Patina Finish

Corner Radius: Available in 1/8" radius, 1" radius, or chamfer.

Outside Dimensions: Approx. 3" (wide) x 4-1/2" (deep) x 1/2" (tall)

Anchoring: Anchored with two SMART PINS PLUS anchors. Use anchors in conjunction with two-part epoxy.

Product Spacing: 18" from end of planters/walls and approximately 36" centers. Do not apply at grout joints.

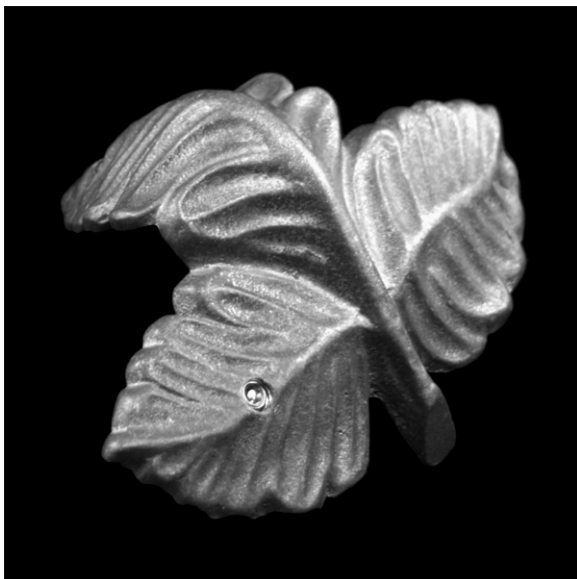
PRODUCT DETAILS

Santa Clara

(Architectural Series)

SKATE STOPPERS
1547 N. Cuyamaca, El Cajon, CA 92020
Tel 619-447-6374 Fax 619-447-6396
www.skatestoppers.com

Description: The cast parts are rendered at realistic scale and incredible detail. The parts use two SMART PINS PLUS anchors.



(shown in Cast Aluminum)

Material: Cast Aluminum or Cast Silicon Bronze

Cast Aluminum: Clear Anodize

Cast Silicon Bronze: Brown Patina Finish

Corner Radius: Available in 1/2" radius or 1" radius.

Outside Dimensions: Approx. 6" (wide) x 4" (deep) x 1/2" (tall)

Anchoring: Anchored with two SMART PINS PLUS anchors. Use anchors in conjunction with two-part epoxy.

Product Spacing: 18" from end of planters/walls and approximately 36" centers. Do not apply at grout joints.