

PRODUCT DETAILS

Childress

(Laser Series - Surface Mount)



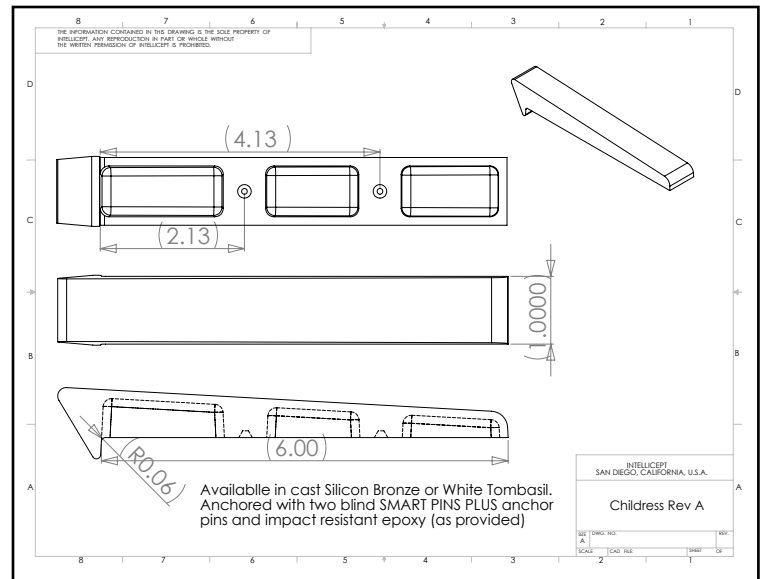
1547 N. Cuyamaca, El Cajon, CA 92020
Tel 619-447-6374 Fax 619-447-6396

www.skatestoppers.com

Description: This cast part is designed for walls from 0" - 3/8" radius edge. Childress is most commonly used on granite, marble, stone, block, brick, or other surfaces with a hard corner. This part uses two concealed SMART PINS PLUS anchors.



(shown in Silicon Bronze)



Material: Cast Silicon Bronze or White Tombasil

Silicon Bronze finish: Brown Patina

White Tombasil finish: Brushed finish with Matte Clear Coat

Corner Radius: For square corner from 1/8" - 3/8" radius.

Outside Dimensions: 1" (wide) x 6" (deep) x 1" (tall)

Anchoring: Anchored with two blind SMART PINS PLUS anchors. Use anchors in conjunction with two-part epoxy.

Product Spacing: 18" from end of planters/walls and approximately 36" centers. Do not apply at grout joints.