

PRODUCT DETAILS

FA 90A

(FA Series - Surface Mount Aluminum)



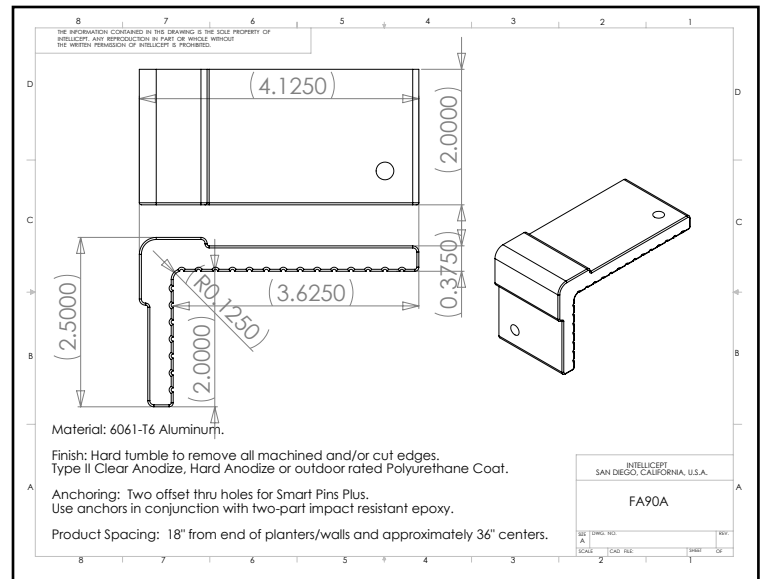
1547 N. Cuyamaca, El Cajon, CA 92020
Tel 619-447-6374 Fax 619-447-6396

www.skatestoppers.com

Description: This patented part is designed for 90 degree walls with 1/8" radius edge. Model FA90A is most commonly used on granite, marble, stone, block, brick, or other surfaces with a hard corner and no vertical clearance restrictions. This part uses two SMART PINS PLUS anchors.



(shown in Clear Anodize)



Material: 6061-T6 Aluminum

Finish: Hard tumbled to remove all machined and/or cut edges. Aluminum finish options include Type II Clear Anodize or Hard Anodize.

Corner Radius: For square corner from 1/8" - 3/8" radius.

Outside Dimensions: 2" (wide) x 4-1/8" (deep) x 2-1/2" (tall)

Anchoring: Anchored with two offset thru holes for SMART PINS PLUS anchors. Use anchors in conjunction with two-part epoxy.

Product Spacing: 18" from end of planters/walls and approximately 36" centers. Do not apply at grout joints.