

PRODUCT DETAILS

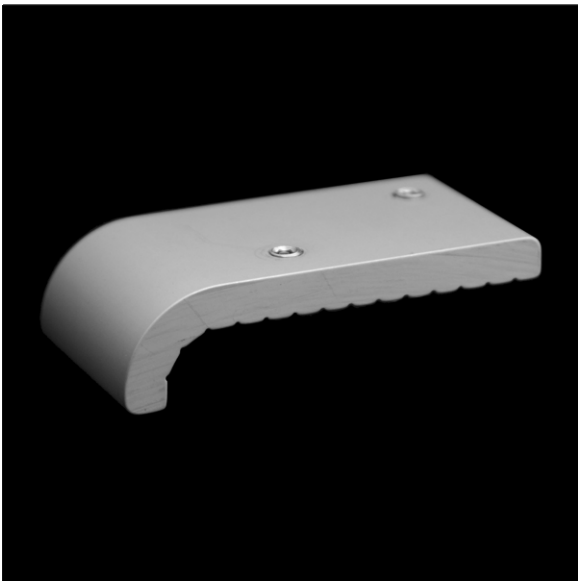
FR 0.5

(FR Series - Surface Mount Aluminum)

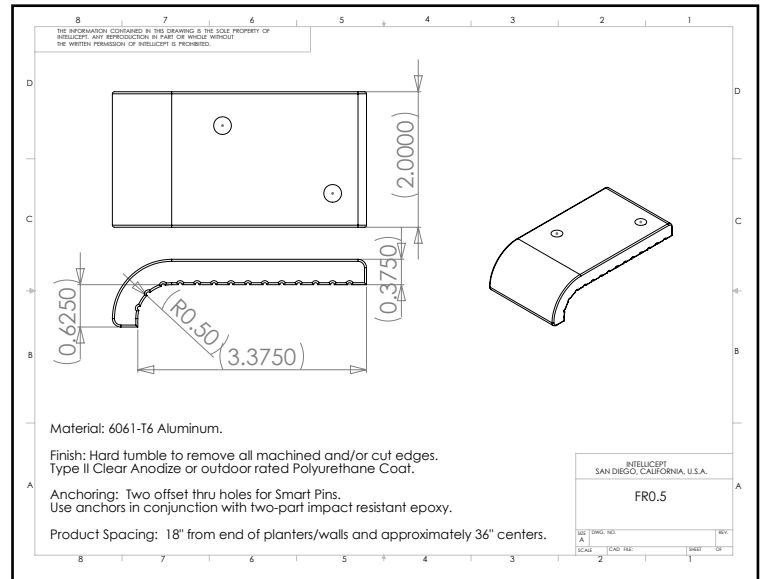


1547 N. Cuyamaca, El Cajon, CA 92020
Tel 619-447-6374 Fax 619-447-6396
www.skatestoppers.com

Description: This part is designed for walls with 1/2" radius edge (may also be used in place of model FA902.5).



shown in Clear Anodize



Material: 6061-T6 Aluminum

Finish: Hard tumble to remove all machined and/or cut edges. Aluminum finish options include Type II Clear Anodize or Hard Anodize.

Corner Radius: For corner with 1/2" radius.

Outside Dimensions: 2" (wide) x 3 3/4" (deep) x 1" (tall)

Anchoring: Two offset thru holes for Smart Pins Plus. Use anchors in conjunction with two-part epoxy.

Product Spacing: 18" from end of planters/walls and approximately 36" centers. Do not apply at grout joints.