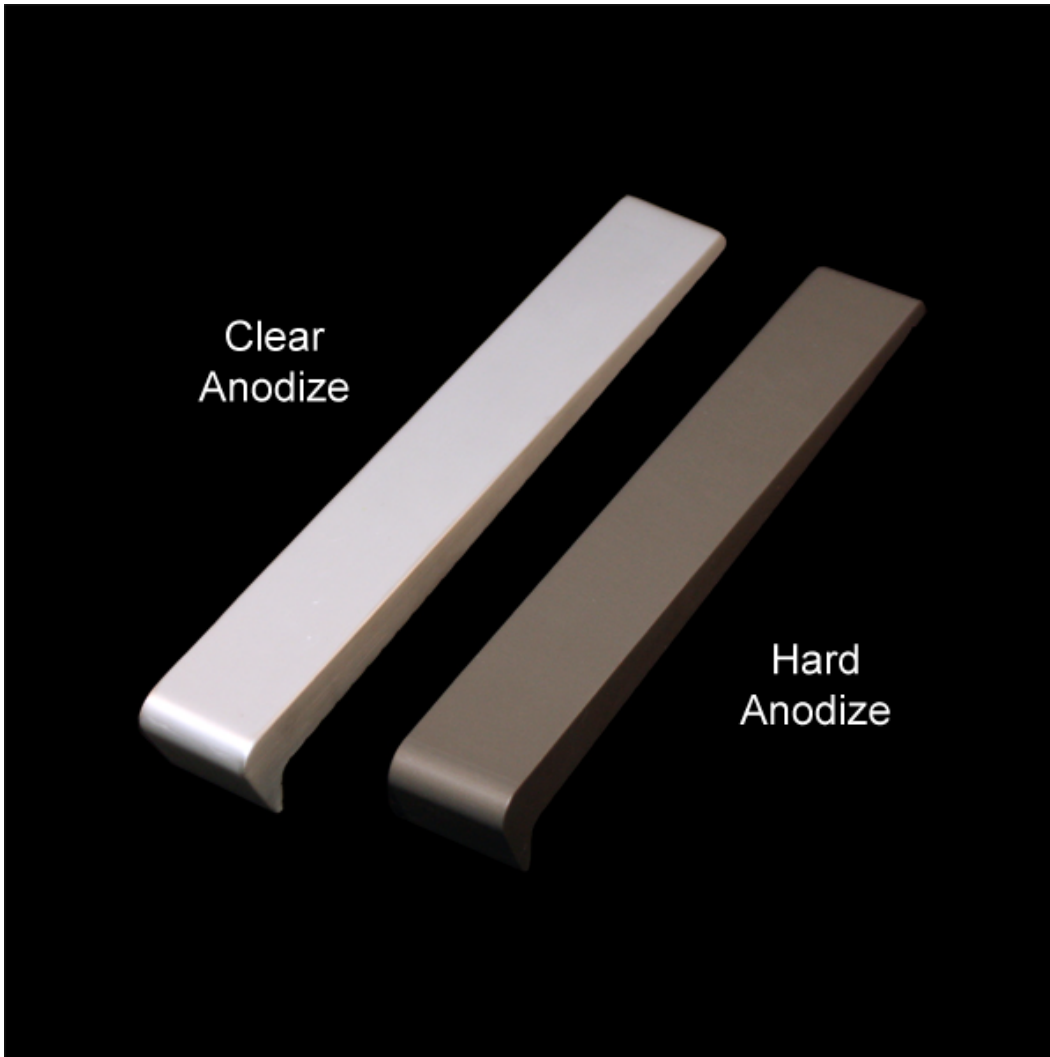




1547 N. Cuyamaca, El Cajon, CA 92020
Tel 619-447-6374 Fax 619-447-6396

www.skatestoppers.com

Gorilla Series (Material)



Alloy

6061-T6 Aluminum*

Finish

Hard Tumble with Clear Anodize

Hard Tumble with Hard Anodize

Custom Color Available (minimums and surcharges apply)

*min. 75% recycled content

PRODUCT DETAILS

Gorilla 012

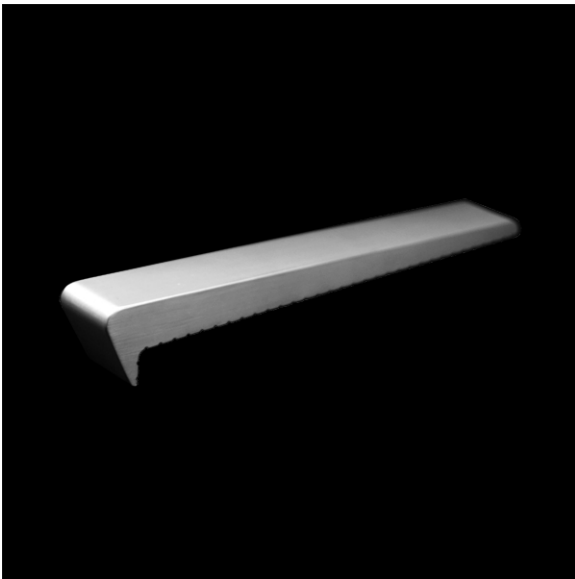
(Gorilla Line- Surface Mount Aluminum)



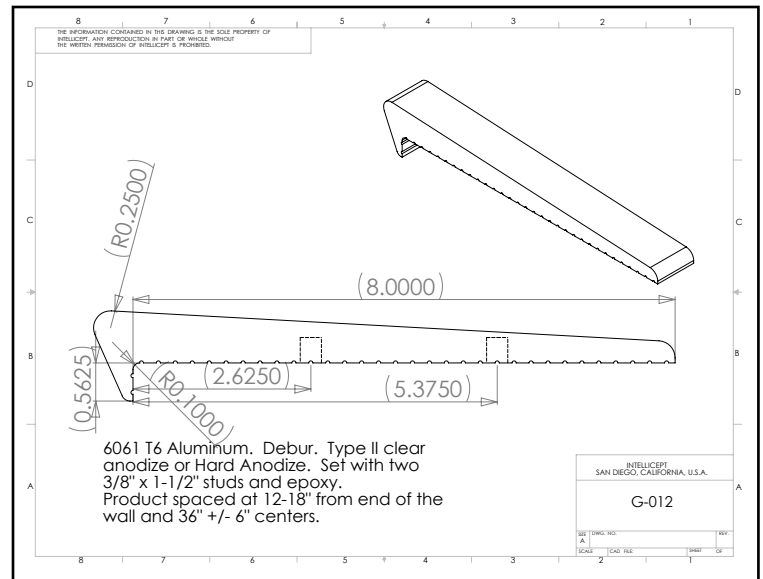
1547 N. Cuyamaca, El Cajon, CA 92020
Tel 619-447-6374 Fax 619-447-6396

www.skatestoppers.com

Description: This extruded aluminum part is designed for walls from 0" - 3/8" radius edge. Gorilla 012 is most commonly used on granite, marble, stone, block, brick, or other surfaces with a hard corner. This part uses two concealed G PIN anchors.



(shown in Clear Anodize)



Material: 6061-T6 Aluminum

Finish: Hard tumbled to remove all machined and/or cut edges. Aluminum finish includes Type II Clear Anodize or Hard Anodize.

Corner Radius: For square corner from 0" - 3/8" radius.

Outside Dimensions: 1-1/8" (wide) x 8" (deep) x 1-1/8" (tall)

Anchoring: Anchored with two concealed G PIN anchors. Use anchors in conjunction with two-part epoxy.

Product Spacing: 12"-18" from end of planters/walls and approximately 36" centers. Do not apply at grout joints.

PRODUCT DETAILS

Gorilla 135

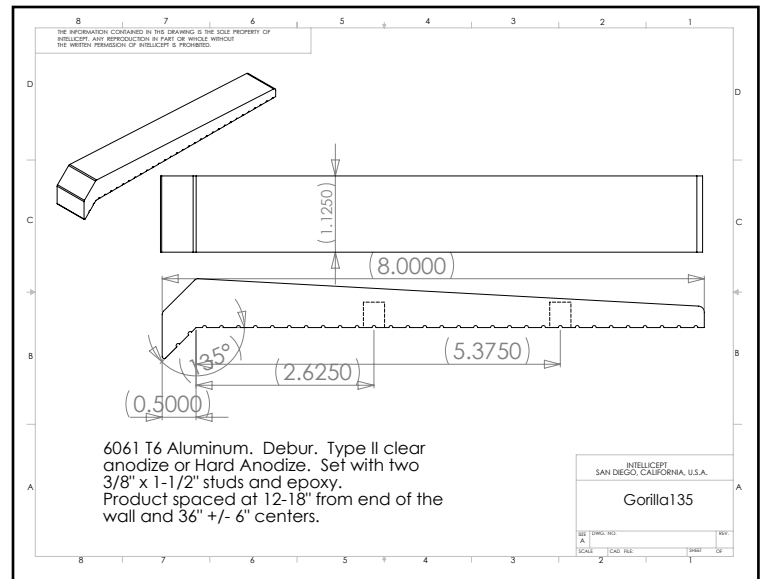
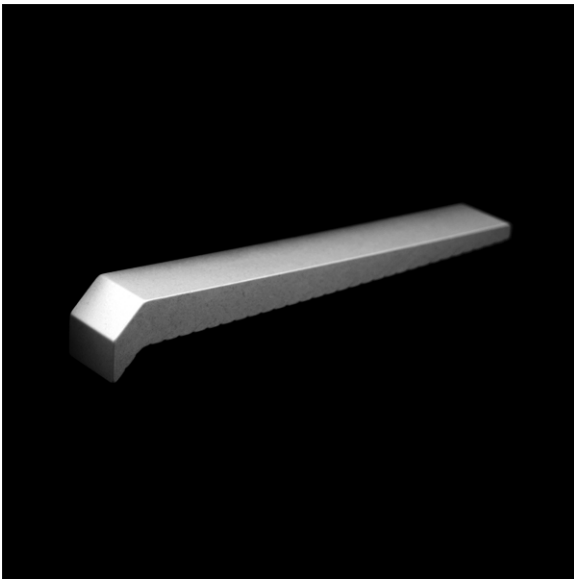
(Gorilla Line- Surface Mount Aluminum)



1547 N. Cuyamaca, El Cajon, CA 92020
Tel 619-447-6374 Fax 619-447-6396

www.skatestoppers.com

Description: This extruded aluminum part is designed for walls with 1/2" or greater chamfer corner. Gorilla 135 is most commonly used on poured concrete, but it may be used on granite, marble or pre-cast concrete. This part uses two concealed G PIN anchors.



Material: 6061-T6 Aluminum

Finish: Hard tumbled to remove all machined and/or cut edges. Aluminum finish includes Type II Clear Anodize or Hard Anodize.

Corner Radius: For 1/2" or greater chamfer corner.

Outside Dimensions: 1 1/8" (wide) x 8" (deep) x 1-1/8" (tall)

Anchoring: Anchored with two concealed G PIN anchors. Use anchors in conjunction with two-part epoxy.

Product Spacing: 12"-18" from end of planters/walls and approximately 36" centers. Do not apply at grout joints.