

PRODUCT DETAILS

HR Series

(Hand Rail Series)



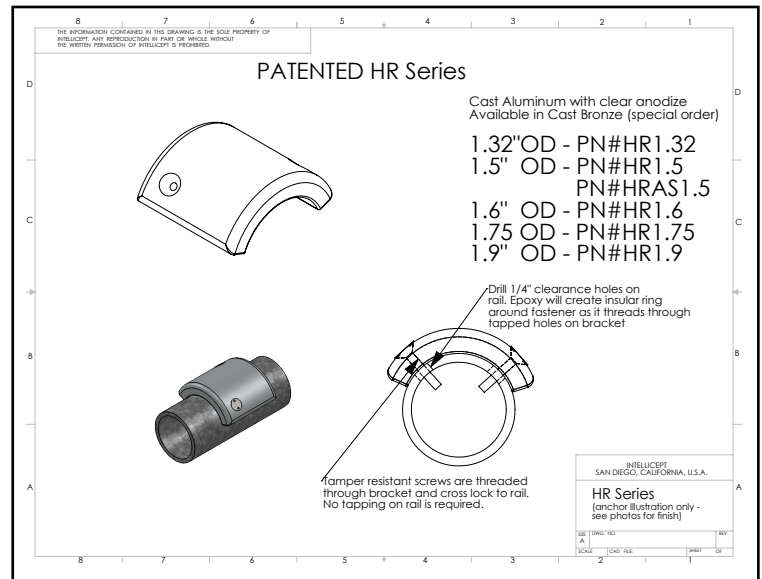
1547 N. Cuyamaca, El Cajon, CA 92020
Tel 619-447-6374 Fax 619-447-6396

www.skatestoppers.com

Description: The patented cast parts are designed for round, tubular handrails. The part is attached with two stainless steel tamper resistant screws and two-part epoxy.



(shown in Cast Aluminum)



Material: Cast Aluminum with Clear Anododize coating (will accept paint).

Outside Rail Diameter: Available for 1.5, 1.6, 1.75 and 1.9 outside diameter.

Outside Dimensions: Approx. 2" long.

Anchoring: Anchored with two stainless steel tamper resistant screws in conjunction with two-part epoxy.

Product Spacing: Spacing is generally symmetric to vertical post at approximately 30" (+6") centers.

PRODUCT DETAILS

Hand Series

(Hand Rail Series)



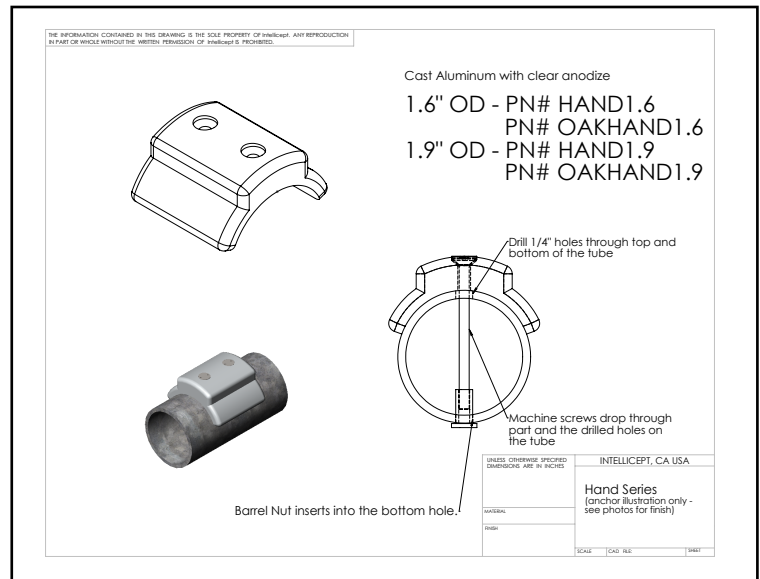
1547 N. Cuyamaca, El Cajon, CA 92020
Tel 619-447-6374 Fax 619-447-6396

www.skatestoppers.com

Description: The cast parts are designed for round, tubular handrails. The part is attached with two tamper resistant screws and barrel nuts.



(shown in Cast Aluminum)



Material: Cast Aluminum with Clear Anododize coating (will accept paint).

Outside Rail Diameter: Available for 1.6 and 1.9 outside diameter.

Outside Dimensions: Approx. 2" long.

Anchoring: Anchored with two tamper resistant screws and barrel nuts.

Product Spacing: Spacing is generally symmetric to vertical post at approximately 30" (+6") centers. Part cannot be applied over the post.

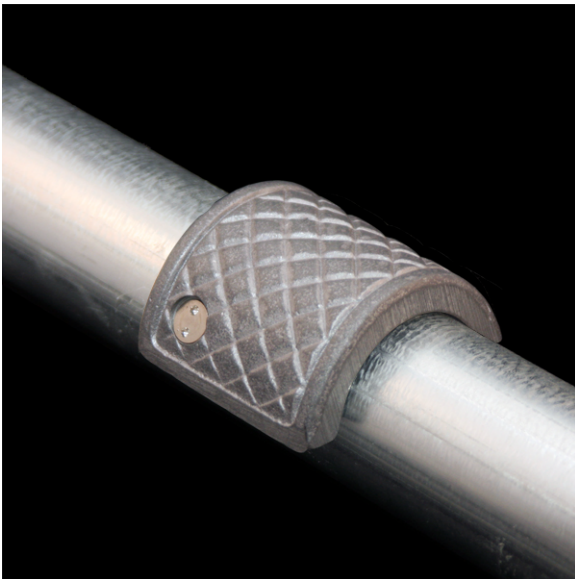
PRODUCT DETAILS

HRAS Series

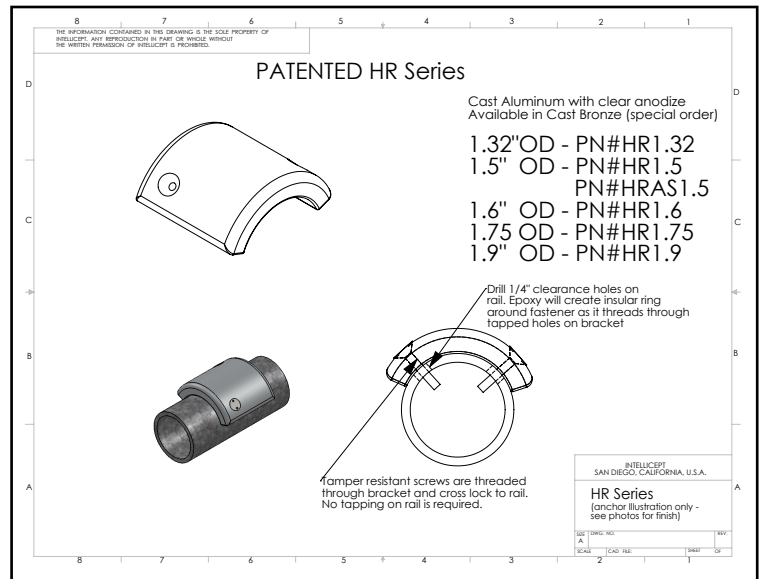
(Hand Rail Series)

SKATE STOPPERS
1547 N. Cuyamaca, El Cajon, CA 92020
Tel 619-447-6374 Fax 619-447-6396
www.skatestoppers.com

Description: The patented cast parts are designed for round, tubular handrails. The part is attached with two stainless steel tamper resistant screws and two-part epoxy.



(shown in Cast Aluminum)



Material: Cast Aluminum with Clear Anododize coating (will accept paint).

Outside Rail Diameter: Available for 1.5 outside diameter.

Outside Dimensions: Approx. 2" long.

Anchoring: Anchored with two stainless steel tamper resistant screws in conjunction with two-part epoxy.

Product Spacing: Spacing is generally symmetric to vertical post at approximately 30" (+6") centers.

PRODUCT DETAILS

OakHand Series

(Hand Rail Series)



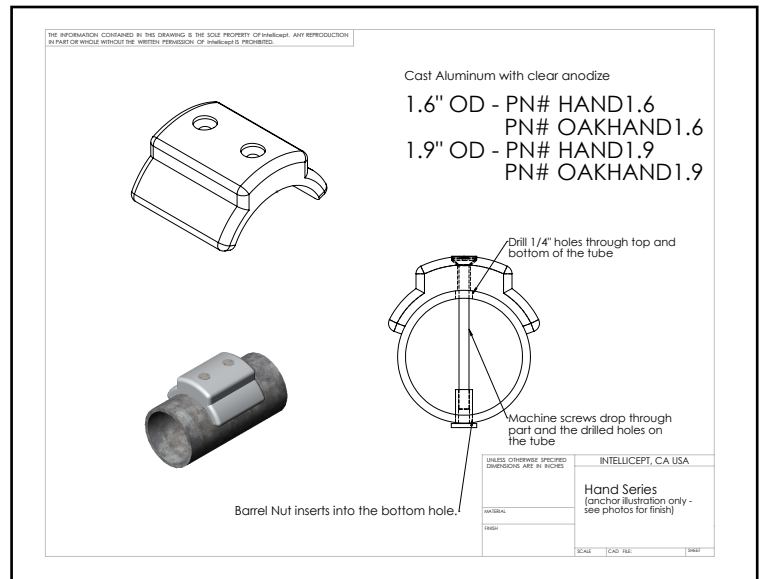
1547 N. Cuyamaca, El Cajon, CA 92020
Tel 619-447-6374 Fax 619-447-6396

www.skatestoppers.com

Description: The cast parts are designed for round, tubular handrails. The part is attached with two tamper resistant screws and barrel nuts.



(shown in Cast Aluminum)



Material: Cast Aluminum with Clear Anododize coating (will accept paint).

Outside Rail Diameter: Available for 1.6 and 1.9 outside diameter.

Outside Dimensions: Approx. 3" long.

Anchoring: Anchored with two tamper resistant screws and barrel nuts.

Product Spacing: Spacing is generally symmetric to vertical post at approximately 30" (+6") centers. Part cannot be applied over the post.

PRODUCT DETAILS

HR Flat

(Hand Rail Series)



1547 N. Cuyamaca, El Cajon, CA 92020
Tel 619-447-6374 Fax 619-447-6396

www.skatestoppers.com

Description: The cast parts are designed for square handrails. The part is attached with two tamper resistant screws.



(shown in Cast Aluminum)

Material: Cast Aluminum with Clear Anododize coating (will accept paint).

Outside Rail Diameter: Flat bar or square tube.

Outside Dimensions: Approx. 1" x 3".

Anchoring: Please call with square tube dimensions for anchoring solution assistance.

Product Spacing: Spacing is generally symmetric to vertical post at approximately 30" (+6") centers. Part cannot be applied over the post.