

PRODUCT DETAILS

Miller

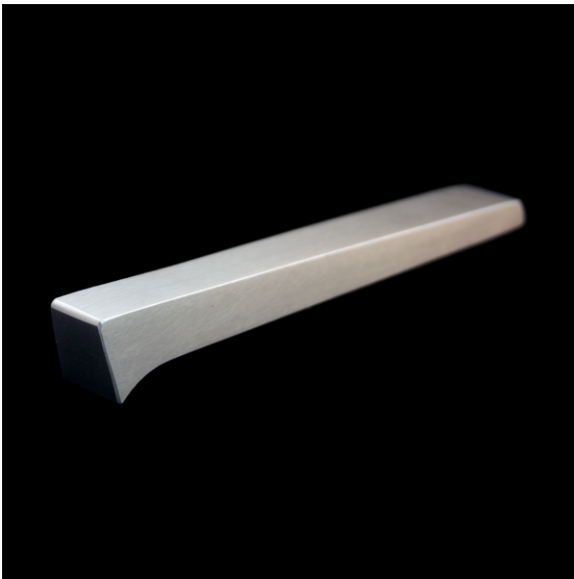
(Laser Series - Surface Mount)



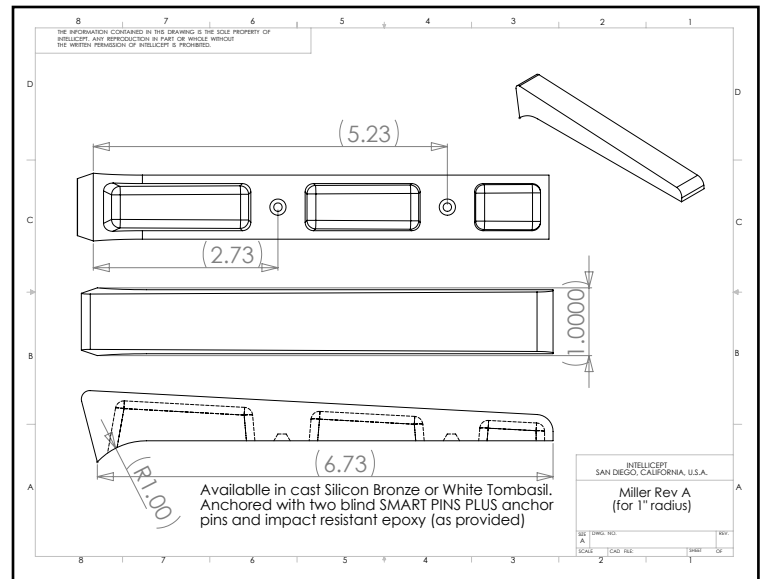
1547 N. Cuyamaca, El Cajon, CA 92020
Tel 619-447-6374 Fax 619-447-6396

www.skatestoppers.com

Description: This cast part is designed for walls with a 1" radius edge. Miller is most commonly used on 2" bullnose brick and poured concrete with 1" radius edge. This part uses two concealed SMART PINS PLUS anchors.



(shown in White Tombasil)



Material: Cast Silicon Bronze or White Tombasil

Silicon Bronze finish: Brown Patina

White Tombasil finish: Brushed finish with Matte Clear Coat

Corner Radius: For corner with 1" radius.

Outside Dimensions: 1" (wide) x 6-3/4" (deep) x 1" (tall)

Anchoring: Anchored with two blind SMART PINS PLUS anchors. Use anchors in conjunction with two-part epoxy.

Product Spacing: 18" from end of planters/walls and approximately 36" centers. Do not apply at grout joints.