

PRODUCT DETAILS

FA 902.5

(FA Series - Surface Mount Aluminum)

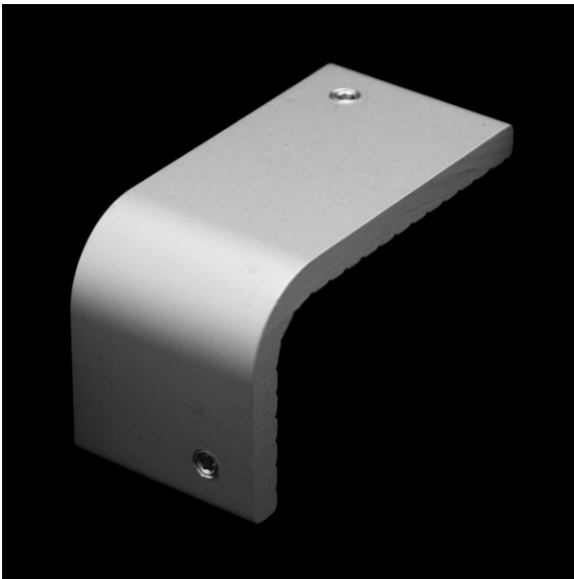


1547 N. Cuyamaca, El Cajon, CA 92020
Tel 619-447-6374 Fax 619-447-6396

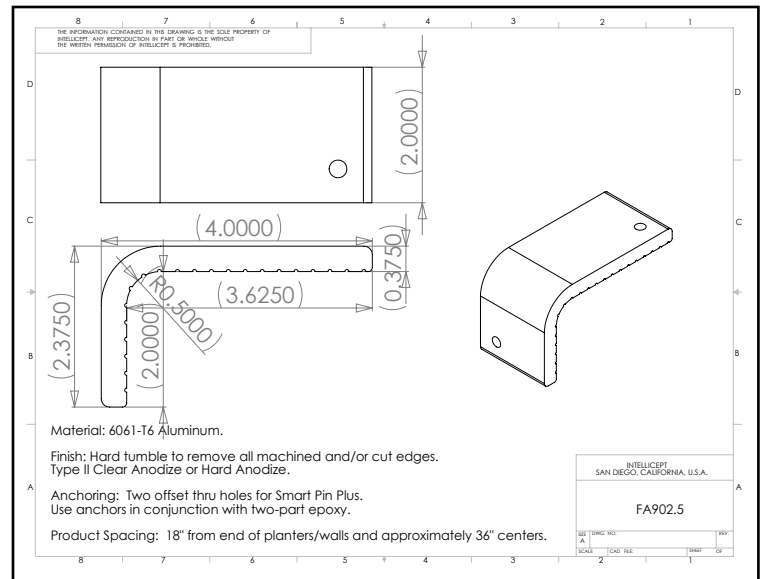
www.skatestoppers.com

Description: This patented part is designed for 90 degree walls, planters, or benches with 1/2" radius edge. FA902.5 is most commonly used on poured concrete.

This product is not intended for use on steps, stairs, sidewalk curb, or any pedestrian trafficked services.



(shown in Clear Anodize)



Material: 6061-T6 Aluminum

Finish: Hard tumbled to remove all machined and/or cut edges. Aluminum finish options include Type II Clear Anodize or Hard Anodize.

Corner Radius: For corner with 1/2" radius.

Outside Dimensions: 2" (wide) x 4" (deep) x 2-3/8" (tall)

Anchoring: Anchored with two offset thru holes for SMART PINS PLUS anchors. Use anchors in conjunction with two-part epoxy.

Product Spacing: 18" from end of planters/walls and approximately 36" centers. Do not apply at grout joints.