

# PRODUCT DETAILS

## FA 90CC

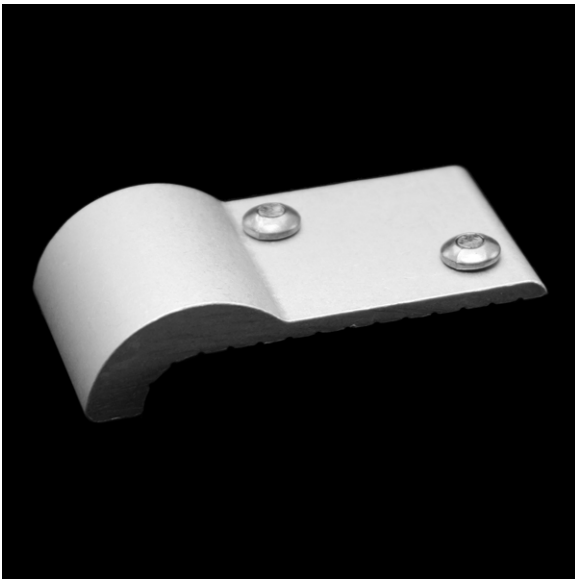
(FA Series - Surface Mount Aluminum)



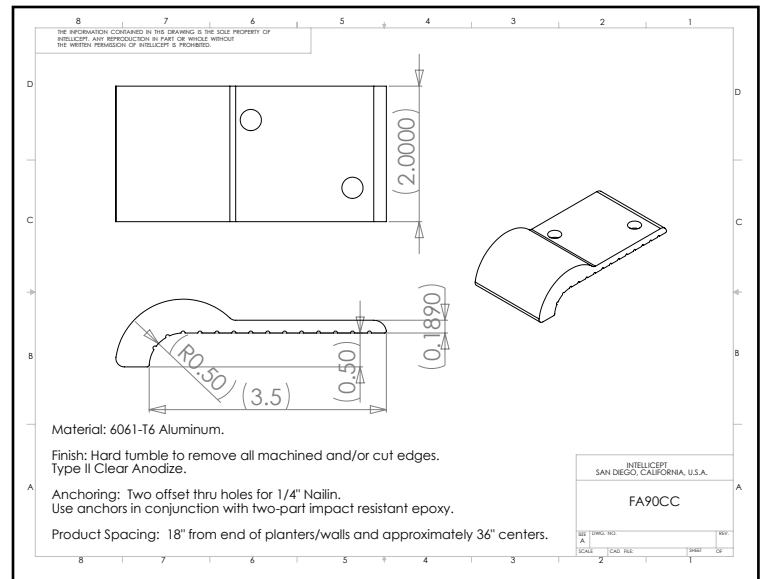
1547 N. Cuyamaca, El Cajon, CA 92020  
Tel 619-447-6374 Fax 619-447-6396

[www.skatestoppers.com](http://www.skatestoppers.com)

**Description:** This part is designed specifically for curb applications or for walls with a 1/2" radius edge (NOT FOR USE ON PRE-CAST CONCRETE). This part uses two 1/4" NAILINS.



(shown in Clear Anodize)



**Material:** 6061-T6 Aluminum

**Finish:** Hard tumbled to remove all machined and/or cut edges. Aluminum finish options include Type II Clear Anodize.

**Corner Radius:** For corner with 1/2" radius.

**Outside Dimensions:** 2" (wide) x 4" (deep) x 1" (tall)

**Anchoring:** Two offset thru holes for 1/4" NAILIN. Use anchors in conjunction with two-part impact resistant epoxy.

**Product Spacing:** 18" from end of planters/walls and approximately 36" centers. Do not apply at grout joints.